

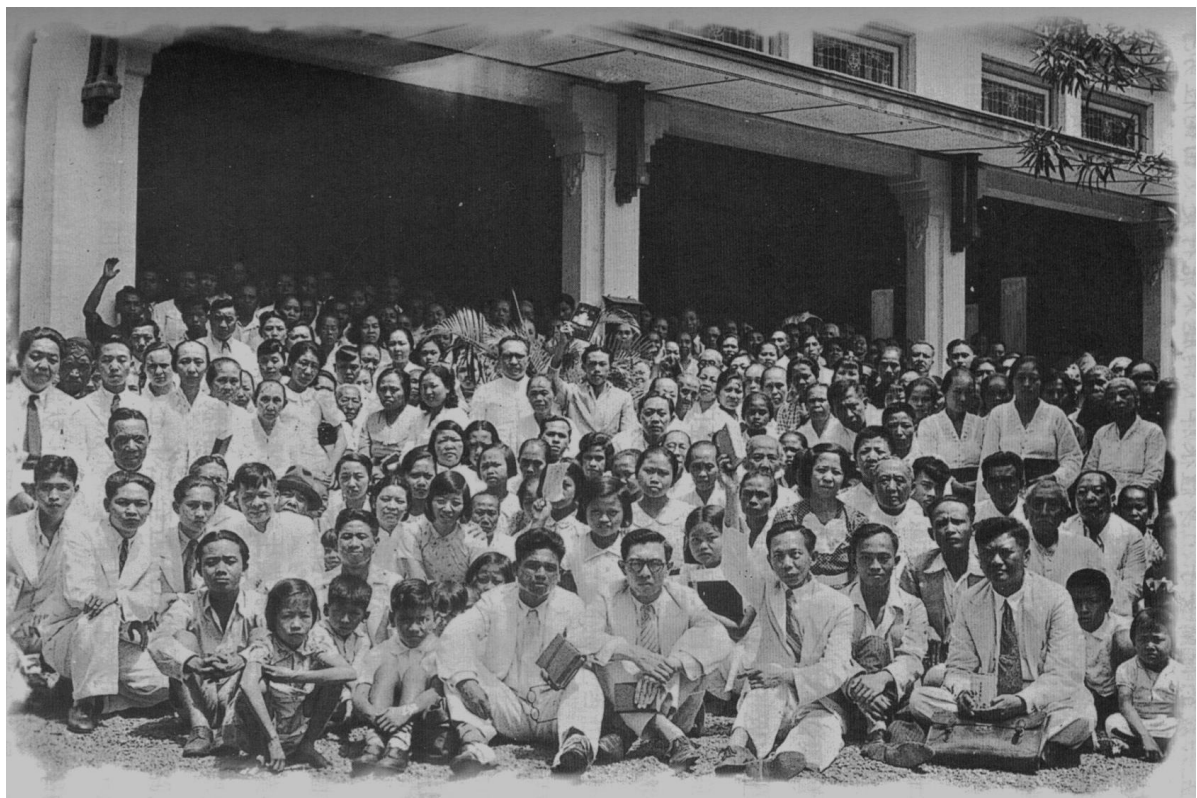
--	--	--	--	--	--	--	--	--

1939

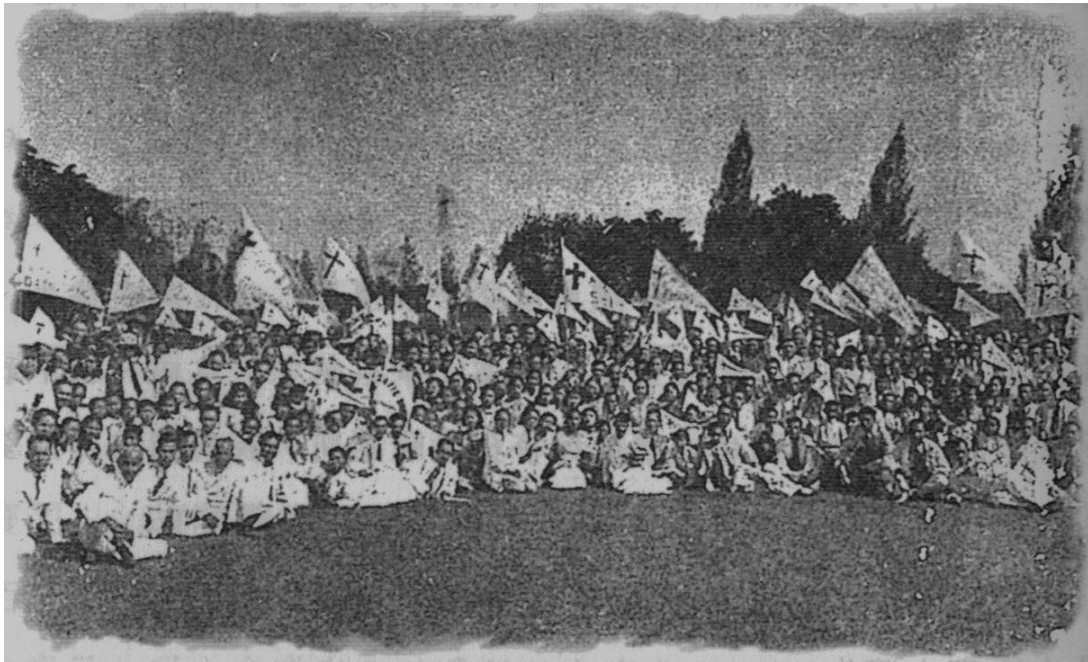
--	--	--	--

[illegible]

• • • • •

[illegible][illegible]

The diagram shows two horizontal bars. The top bar is a single continuous rectangle divided into 20 equal vertical segments, representing 100%. The bottom bar is a rectangle divided into 20 equal vertical segments, with the first 15 segments filled with a light gray pattern, representing 75%.

[illegible]

--	--	--	--	--	--	--	--	--

18

[illegible]

III #3

Admin 20 2025 14:48:32

Admin 1 2025 06:27:49