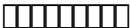




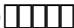


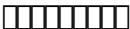

















[illegible]

1853

-  1934 
-  1934-1935 
-  1935 
-  1935-1936 
-  1936 
-  1937 
-  1937-1938 
-  1938 
-  1938 
-  1939 
-  1939 
-  1939 

--	--	--	--	--	--	--	--	--

1934

--	--	--	--	--	--	--	--

[illegible][illegible][illegible][illegible][illegible]

[illegible]

[illegible]

--	--	--	--

[illegible][illegible][illegible][illegible][illegible][illegible][illegible]

--	--	--	--	--	--	--	--

[illegible]

--	--	--	--	--	--	--	--	--

Moore

[illegible][illegible][illegible][illegible][illegible]

[illegible][illegible]

Sherwood Eddy


Dr.

[illegible][illegible][illegible][illegible]



A handwriting practice sheet with ten rows of boxes. Each row contains 26 boxes, one for each letter of the alphabet. The first row is pre-filled with the letters A through Z. The remaining nine rows are empty for practice.

[illegible]

[illegible][illegible]

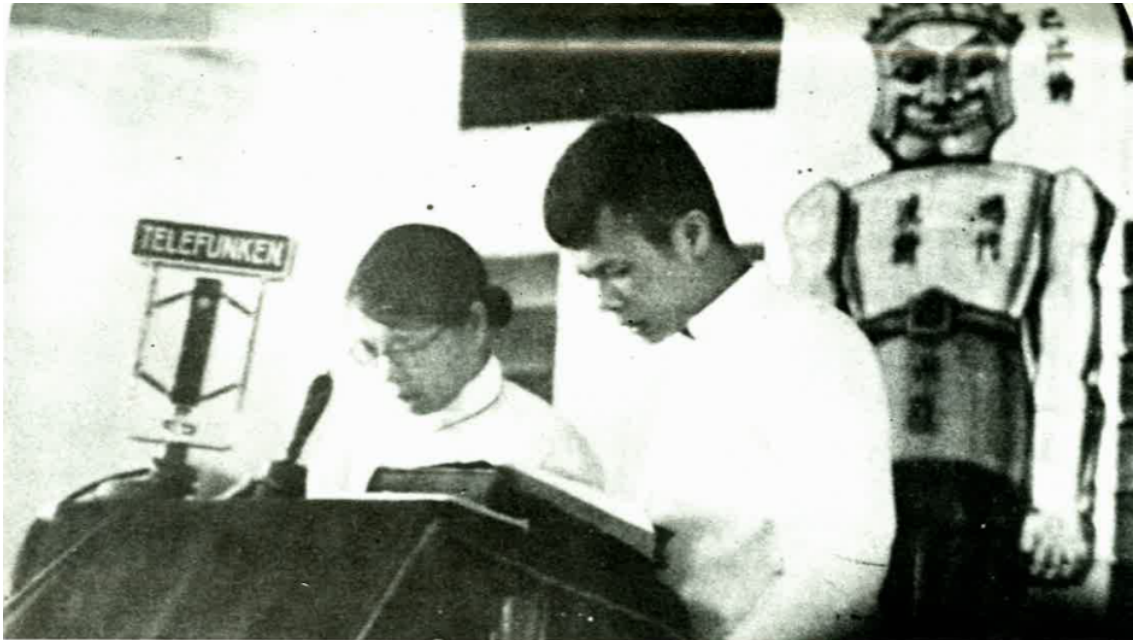
--	--	--	--	--	--	--	--

1935

--	--	--	--	--

8□

[illegible][illegible]

[illegible][illegible]

A large grid of 20 columns and 10 rows of empty boxes, intended for students to write their answers to the questions.

Corfu

1. The first part of the document discusses the importance of maintaining accurate records of all transactions. This includes not only the amount of the transaction but also the date, time, and location. It is crucial to ensure that all data is entered correctly and that the records are kept up-to-date.

Close the door

2. The second part of the document focuses on the importance of maintaining accurate records of all transactions. This includes not only the amount of the transaction but also the date, time, and location. It is crucial to ensure that all data is entered correctly and that the records are kept up-to-date.

3. The third part of the document discusses the importance of maintaining accurate records of all transactions. This includes not only the amount of the transaction but also the date, time, and location. It is crucial to ensure that all data is entered correctly and that the records are kept up-to-date.

4. The fourth part of the document focuses on the importance of maintaining accurate records of all transactions. This includes not only the amount of the transaction but also the date, time, and location. It is crucial to ensure that all data is entered correctly and that the records are kept up-to-date.

5. The fifth part of the document discusses the importance of maintaining accurate records of all transactions. This includes not only the amount of the transaction but also the date, time, and location. It is crucial to ensure that all data is entered correctly and that the records are kept up-to-date.

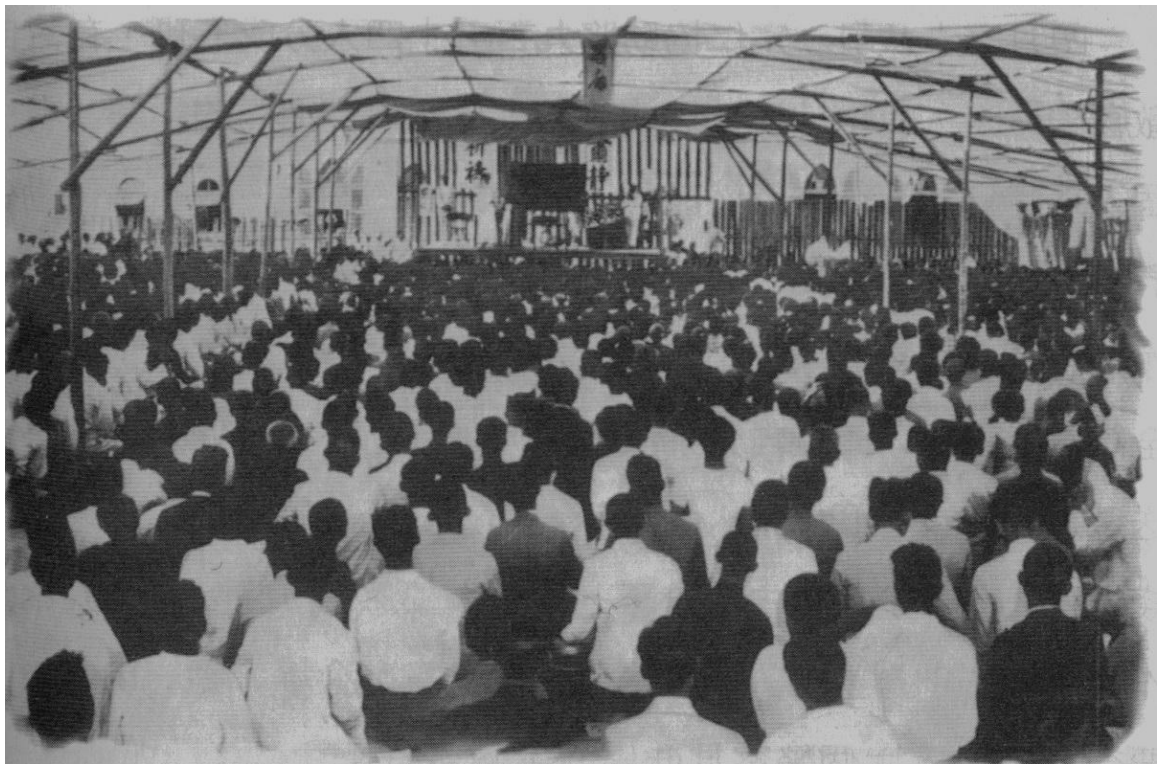
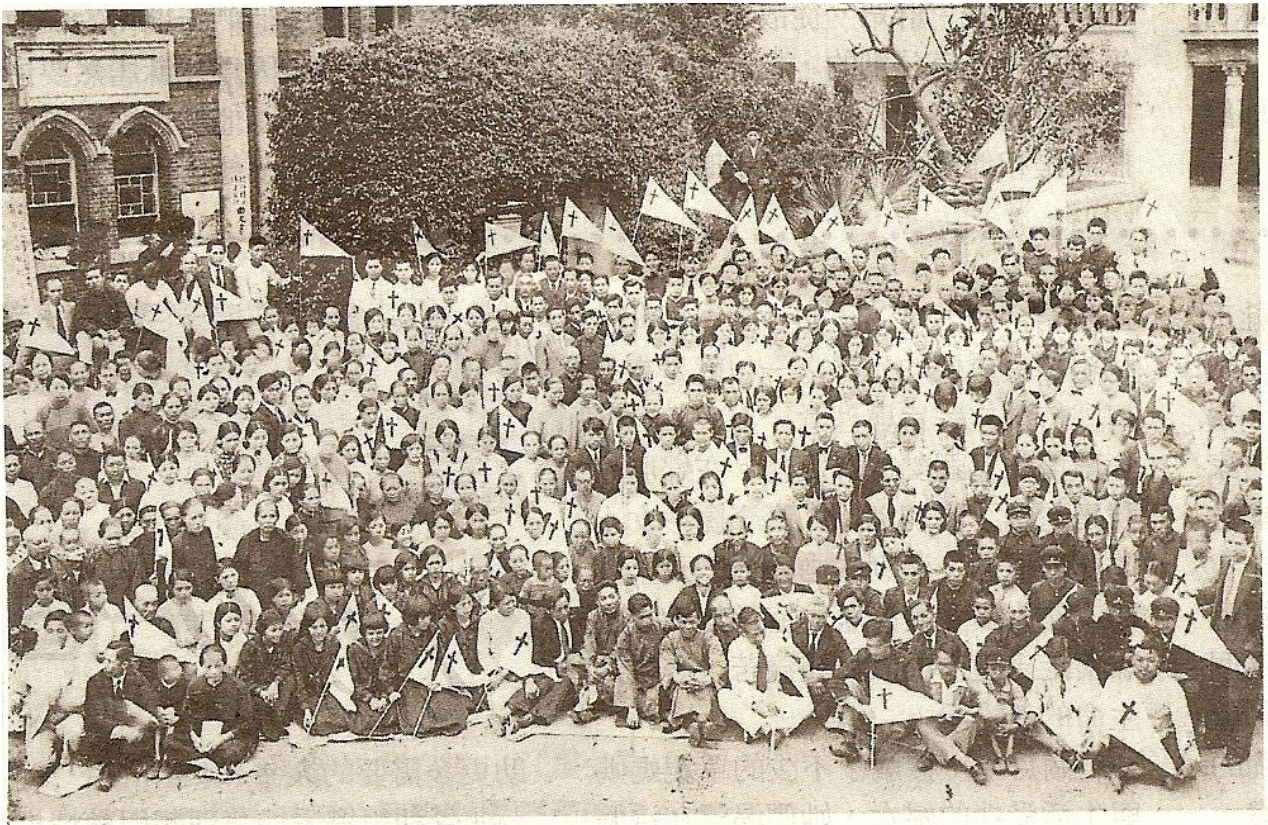
6. The sixth part of the document focuses on the importance of maintaining accurate records of all transactions. This includes not only the amount of the transaction but also the date, time, and location. It is crucial to ensure that all data is entered correctly and that the records are kept up-to-date.

7. The seventh part of the document discusses the importance of maintaining accurate records of all transactions. This includes not only the amount of the transaction but also the date, time, and location. It is crucial to ensure that all data is entered correctly and that the records are kept up-to-date.

8. The eighth part of the document focuses on the importance of maintaining accurate records of all transactions. This includes not only the amount of the transaction but also the date, time, and location. It is crucial to ensure that all data is entered correctly and that the records are kept up-to-date.

9. The ninth part of the document discusses the importance of maintaining accurate records of all transactions. This includes not only the amount of the transaction but also the date, time, and location. It is crucial to ensure that all data is entered correctly and that the records are kept up-to-date.


10. The tenth part of the document focuses on the importance of maintaining accurate records of all transactions. This includes not only the amount of the transaction but also the date, time, and location. It is crucial to ensure that all data is entered correctly and that the records are kept up-to-date.



--	--	--	--	--	--	--	--	--

1936

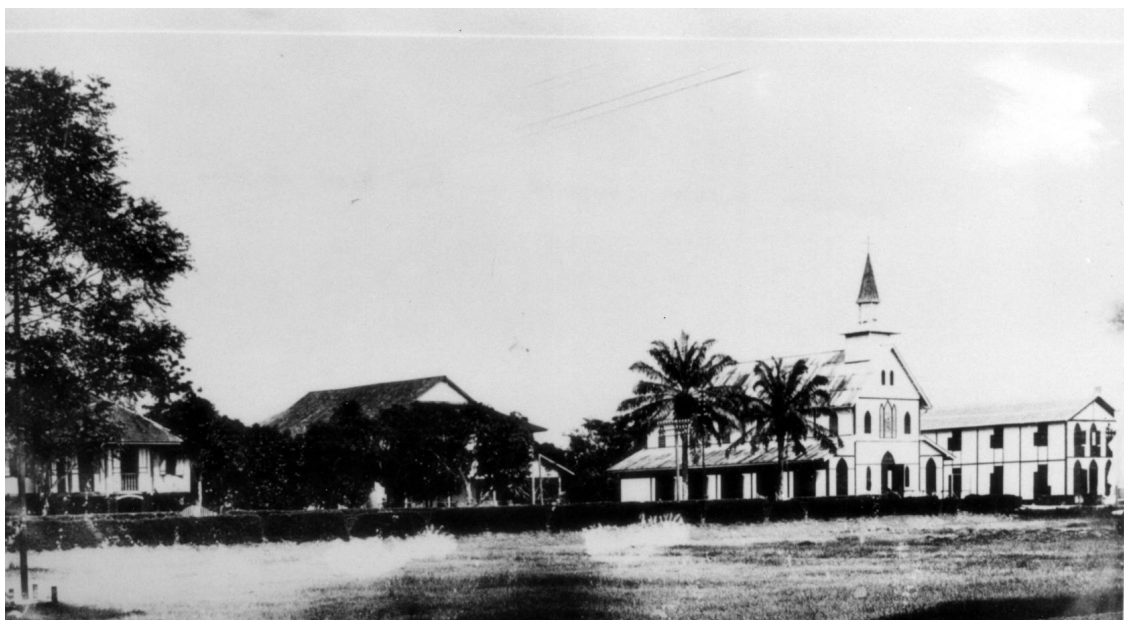
--	--	--	--	--



Gerald V. Summers

Rev James M. Hoover

Rev

[illegible]

Masland Methodist Church 1936 9 21 -10 1

1936 9 21 -10 1

113 464

20

[illegible][illegible]

1850

XXXXXXXXXXXXXXXXXXXXXXXXXXXXXXXXXXXX

XXXXXXXXXXXXXXXXXXXXXXXXXXXXXXXXXXXX
XXXXXXXXXXXXXXXXXXXXXXXXXXXXXXXXXXXX
XXXXXXXXXXXXXXXXXXXXXXXXXXXXXXXXXXXX

XXXXXXXXXXXXXXXXXXXXXXXXXXXXXXXXXXXX
XXXXXXXXXXXXXXXXXXXXXXXXXXXXXXXXXXXX
XXXXXXXXXXXXXXXXXXXXXXXXXXXXXXXXXXXX

XXXXXXXXXXXXXXXXXXXXXXXXXXXXXXXXXXXX
XXXXXXXXXXXXXXXXXXXXXXXXXXXXXXXXXXXX
XXXXXXXXXXXXXXXXXXXXXXXXXXXXXXXXXXXX

XXXXXXXXXXXXXXXXXXXXXXXXXXXXXXXXXXXX

XXXXXXXXXXXXXXXXXXXXXXXXXXXXXXXXXXXX
XXXXXXXXXXXXXXXXXXXXXXXXXXXXXXXXXXXX
XXXXXXXXXXXXXXXXXXXXXXXXXXXXXXXXXXXX
XXXXXXXXXXXXXXXXXXXXXXXXXXXXXXXXXXXX
XXXXXXXXXXXXXXXXXXXXXXXXXXXXXXXXXXXX

XXXXXXXXXXXXXXXXXXXXXXXXXXXXXXXXXXXX
XXXXXXXXXXXXXXXXXXXXXXXXXXXX

XXXXXX Conte Verdi
XXXXXXXXXXXXXXXXXXXXXXXXXXXXXXXXXXXX
XXXXXXXXXXXXXXXXXXXXXXXXXXXXXXXXXXXX
XXXXXXXXXXXXXXXXXXXXXXXXXXXXXXXXXXXX
XXXXXXXXXXXXXXXXXXXX --- XXXXXXXXXXXXXXXXXXXXXXXXXXXXXXX

XXXXXX --- XXXXXX ---
XXXXXXXXXXXXXXXXXXXXXXXXXXXXXXXXXXXX
XXXXXXXXXXXXXXXXXXXXXXXXXXXXXXXXXXXX
XXXXXXXXXXXXXXXXXXXXXXXXXXXXXXXXXXXX
XXXXXXXXXXXXXXXXXXXXXXXXXXXXXXXXXXXX
XXXXXXXXXXXXXXXXXXXXXXXXXXXXXXXXXXXX
XXXXXXXXXXXXXXXXXXXXXXXXXXXX

XXXXXXXXXXXXXXXXXXXXXXXXXXXXXXXXXXXX
XXXXXXXXXXXXXXXXXXXXXXXXXXXX
XXXXXXXXXXXXXXXXXXXX 4
XXXXXXXXXXXXXXXXXXXXXXXXXXXXXXXXXXXX
XXXXXXXXXXXXXXXXXXXXXXXXXXXXXXXXXXXX
XXXXXXXXXXXXXXXXXXXXXXXXXXXX

1XXXXX 2XXXXX 3

XXXXXX 18XXXXXXXXXX

--	--	--	--	--	--	--	--	--

1937

--	--	--	--	--	--	--	--

--	--	--	--

[illegible][illegible][illegible]

[illegible][illegible][illegible][illegible][illegible]

A 10x10 grid of squares. The first four rows are completely filled with black squares. The last six rows are empty.

[illegible][illegible]

--	--	--	--

[illegible]

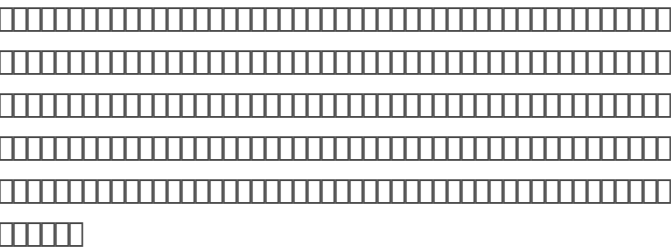
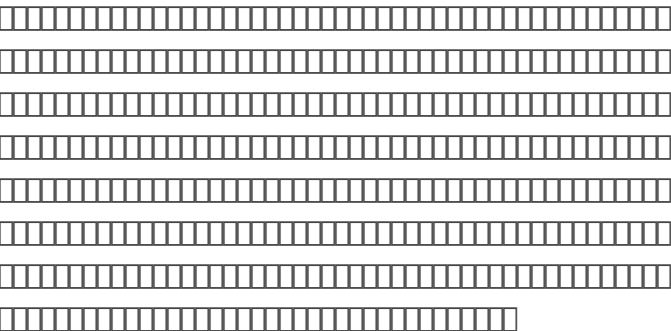
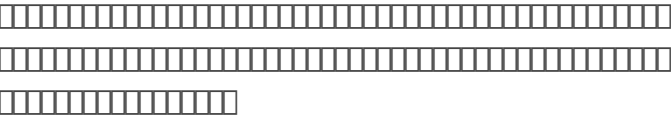
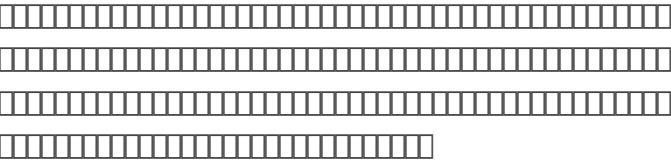
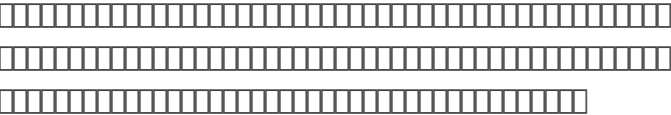
A grid of 10 rows of empty boxes for handwriting practice. Each row contains 20 boxes. The first row is partially filled with the letters 'A', 'B', 'C', 'D', 'E', 'F', 'G', 'H', 'I', 'J', 'K', 'L', 'M', 'N', 'O', 'P', 'Q', 'R', 'S', 'T', 'U', 'V', 'W', 'X', 'Y', 'Z'.

--	--	--	--	--

A grid of 10 rows of empty boxes for handwriting practice. Each row contains 20 boxes. The first 18 boxes in each row are connected by a vertical line on the left, and the last two boxes are separate.



1938

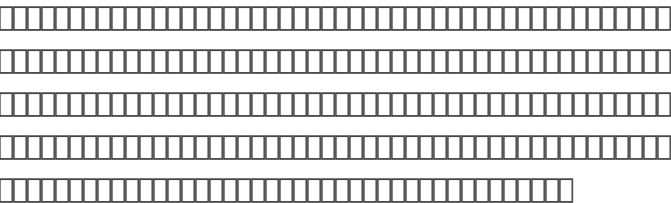
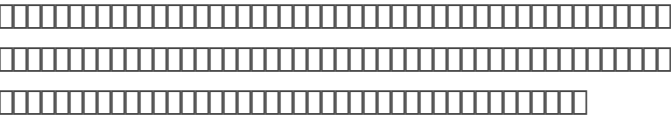
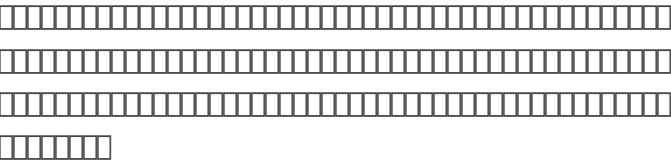
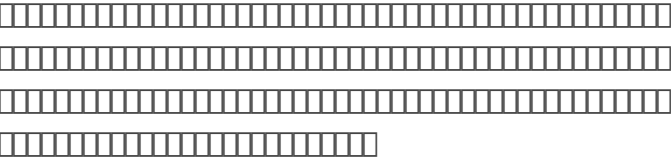


[illegible][illegible][illegible]

[illegible][illegible][illegible][illegible]



1938





1939



.....

.....

.....

.....

.....

.....

.....

.....

.....

.....

.....

.....

.....

.....

.....

.....

.....

.....

.....

.....

.....

.....

.....

.....

.....

.....

.....

.....

.....

.....

.....

.....

— —

--	--	--	--	--	--	--	--	--

1939

--	--	--

A horizontal number line with arrows at both ends, labeled from 0 to 100 in increments of 10. A vertical tick mark is drawn at the number 10, and another vertical tick mark is drawn at the number 30.

25-37

吳靜聆女士的生平

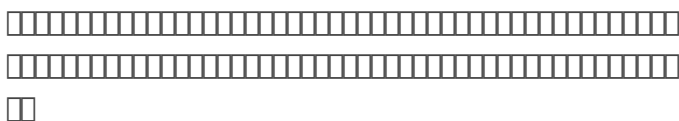
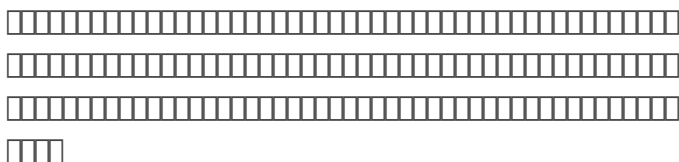
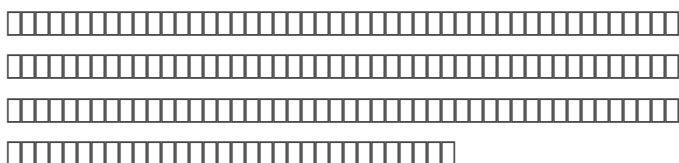
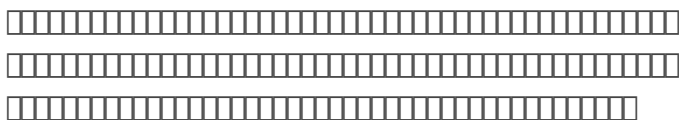
[illegible]

Rev. Timothy Tow

[illegible][illegible][illegible][illegible]



1939





1-4



18

